

Inermediate Zone (n.) :

Transition space between urban and biosphere.

Hybrid : Anything derived from heterogeneous sources, or composed of elements of different or incongruous kinds.

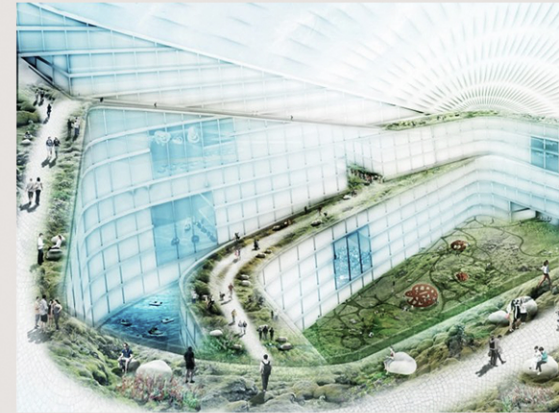
Biology : The scientific study of living things.

Socio-biosphere: Relating to social aspects the sphere of life that is comprising the entire earth and the living organisms that inhabit it.

Socio ecological: Relating to society that has relation with ecology.

Homeostasis : The tendency of a system, to maintain internal stability, owing to the coordinated response of its parts to any situation or stimulus that would tend to disturb its normal condition or function.

Eco-urban : Settlements that are designed to be self-sustaining and respectful to the eco-system. Bringing together both urban and environment with its living beings and elements that create ecosystem.



Troll, Antarctica: Hybrid /Agricultural space. Vanessa Keith, 2016.

Bridging : Making connection to two different side, point or situation.

Eco-bridge : Areas of habitat that connects wildlife populations that makes spaces for animals to migrate between two habitats.

